



## PRESS RELEASE

2 February 2026

Dear Editor

### Marlborough Cemetery Consultation

I'm writing to introduce a consultation that the Town Council is launching in February.

Marlborough Cemetery was opened in 1924 and now, 102 years on, it is running out of space. Although numbers vary each year, we estimate that we will run out of space for ashes interments in about 6 years and for burials in 10-11 years.



The Town Council has searched unsuccessfully for a new site in the Marlborough parish for more than 10 years. Cemetery land was included in the 'call for sites' to local landowners when the Marlborough Area Neighbourhood Plan was being developed. Nothing came back, which is perhaps unsurprising as there is little profit for a landowner from a cemetery.



Reluctantly, it is proposed to extend the Cemetery onto part of Marlborough Common so we are able to continue to offer burials within the parish.

*Photo: the proposed extension site*

The first town cemetery, now known as the Victorian Cemetery & Arboretum, is next door to the current cemetery. If people agree to the extension, it will mean family burials can continue at the same location, providing continuity from 1855 into the future.



As the land in question is common land, DEFRA<sup>1</sup> requires the Town Council to offer alternative land to become common land, and to gain agreement from the public.

## Potential new common land



*Photo: outlined top right is the location of the Cemetery*

The proposed new common land is near Hawthorn Meadow, between the open space known as 'Tin Pit' and the Bay Meadows Nature Reserve. Pedestrian access is via Portfields Road. It is approximately 4 times larger than the area at Marlborough Common.

Making it common land will provide a wildlife corridor from Bay Meadows Nature Reserve to Stonebridge Wild River Reserve via the Rivers Og and Kennet. Common land also benefits from stronger protection against any further development as well as guaranteeing public open access.

<sup>1</sup> <https://www.gov.uk/government/organisations/department-for-environment-food-rural-affairs>

When GreenSquare Homes built the houses at Hawthorn Meadow<sup>2</sup> one of the planning conditions was to create a play area and adjacent amenity land, which is to be handed to the Town Council. We are waiting for this handover to be completed once Wiltshire Council (the planning authority) agrees that all planning conditions have been met, and we are proceeding with the consultation ahead of that handover to prevent any delay to our plans to extend the Cemetery.

## People can find out more information as follows:

- Come to a Town Council meeting in Marlborough Town Hall at 7pm on Monday, 23 March
- Visit us at either site on Saturday 28 March between 10am and 12noon where we will be available to answer questions
- Online at [www.marlborough-tc.gov.uk](http://www.marlborough-tc.gov.uk) where there is also a 9-minute video explaining more about the background

## The consultation will ask:

**Do you support Marlborough Town Council's proposal to extend the existing cemetery on to Marlborough Common, offering alternative land as common land adjacent to Hawthorn Meadow, Marlborough?**

## Voting

We are running the consultation in a similar way to a referendum. Registered electors in the Marlborough Parish (both East and West wards) will be eligible to vote. They will not receive a poll card at their address, but they will be able to cast their vote in these ways:

- Vote in person on ballot day between 8am and 8pm on Thursday, 16 April at Marlborough Town Hall
- People unable to attend on 16 April can call in to the Town Council office between 9am and 4pm from Monday 13 to Wednesday 15 April to cast their vote

In both cases, photo ID will be required and names will be checked against the electoral roll. There is no postal or online alternative.

Yours sincerely

*Richard Spencer-Williams*

Richard Spencer Williams, PSLCC  
Town Clerk

---

<sup>2</sup> <https://greensquareaccord.co.uk/news/housing/handovers-complete-at-hawthorn-meadow>

---

## Notes to editors

### Information Leaflet

Attached as PDF file.

### Marlborough Cemetery

Opened 1924. Located at Frees Avenue next to Marlborough Common.

<https://www.marlborough-tc.gov.uk/council/cemetery-burials>

### Victorian Cemetery

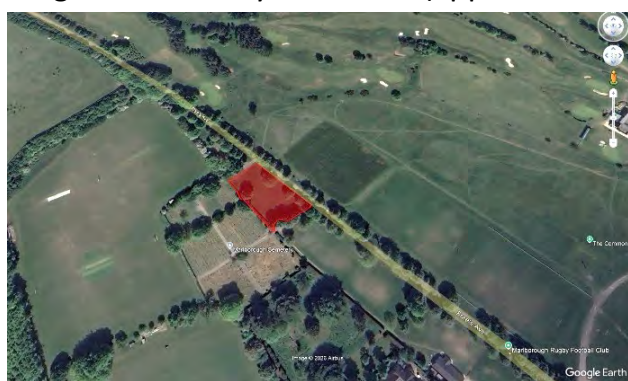
Opened in 1855. Located at Frees Avenue next to Marlborough Common. Once it reached capacity the current cemetery was created next door to it (opened in 1924).

<https://www.marlborough-tc.gov.uk/the-victorian-cemetery>

### The Land Swap

These illustrations show the approximate outlines and scale of the two pieces of land.

Left – Hawthorn Meadow (approx. 12,984m<sup>2</sup>). Right – Cemetery Extension (approx. 3,258m<sup>2</sup>)



## Bay Meadows Nature Reserve

<https://www.wiltshirewildlife.org/nature-reserves/bay-meadows>

### Tin Pit

Owned by Marlborough Town Council, Tin Pit is an open space bordering the River Og, accessed via Rabley Wood View or the footpath at the end of Tin Pit (off St Martins). Currently leased for grazing, however there's a footpath that leads down to the river.

### Stonebridge Wild River Reserve

<https://www.kennetandpang.org/about-the-river/stonebridge-wild-river-reserve>

### Hawthorn Meadow

Photo taken in January 2026 and AI image of how it could look in summer.



## Neighbourhood Plan

The Marlborough Area Neighbourhood Plan Steering Group issued a call for sites to landowners in December 2018 – this included land for cemetery space

<https://www.marlborough-tc.gov.uk/news/news-articles/1938-call-for-sites>



# Marlborough Area Neighbourhood Plan

## CALL FOR SITES

We have listened to local people in Marlborough (including Manton), Mildenhall, Preshute and Savernake and know what their land requirements are and these findings have been backed up with professional research and analysis.

Do you own or know of land which is potentially suitable for development for affordable housing, additional car parking, formal sports and recreational facilities, a new medical centre and a new cemetery? If so, we want to hear from you!

We are now contacting landowners, developers and agents and want to make sure that we reach all those with an interest in developing land to meet our needs.

A map of the Marlborough Neighbourhood Area can be found on our website  
[www.manp.co.uk](http://www.manp.co.uk)

If you are interested in proposing a site for consideration, please contact Shelley Parker, Town Clerk/Secretary of the Steering Group for the Marlborough Area Neighbourhood Plan (MANP) by **4pm on Monday, 17 December 2018**. Once we have details (simple map showing the site, ownership, etc.) we can then consider a site's suitability for inclusion in our Neighbourhood Plan.

### PLEASE ADDRESS ALL CORRESPONDENCE TO:

Mrs S A Parker,  
Secretary to MANP  
c/o Marlborough Town Council  
5 High Street  
Marlborough  
SN8 1AA  
[townclerk@marlborough-tc.gov.uk](mailto:townclerk@marlborough-tc.gov.uk)  
01672 512487



Welcome to  
**Marlborough  
Cemetery**

# Marlborough Cemetery Consultation

Marlborough Cemetery was opened in 1924 and now, 100 years on, it is running out of space: for ashes interments in about 6 years, and burials in 10-11 years

The Town Council has searched unsuccessfully for a new site in the Marlborough parish for over 10 years

It is proposed to extend the Cemetery onto part of Marlborough Common to be able to continue to offer burials within the parish boundaries

As the land in question is common land, DEFRA requires the Town Council to offer alternative land as common land, and gain agreement from the public



Remaining space

Proposed extension

Victorian  
Cemetery  
& Arboretum

The proposed new common land is near Hawthorn Meadow, between Tin Pit and the Bay Meadows Nature Reserve

Making it common land will protect it from development and guarantee public open access



Find out more at a Town Council meeting in the Town Hall at 7pm on Monday, 23 March or both pieces of land, 10am-12 noon on Saturday, 28 March

Registered electors can vote at the Town Hall on Thursday, 16 April 8am-8pm – you will need photo ID

More information: [www.marlborough-tc.gov.uk](http://www.marlborough-tc.gov.uk)

